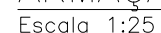
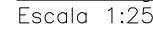
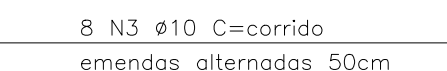


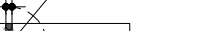
Escala 1:25



Escala 1:25



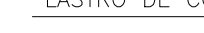
Escala 1:20



## S/Escala

\_\_\_\_\_

Example 1.30



– A ALTURA E ESPECIFICAÇÃO DO FECHAMENTO DEVERÁ SEGUIR A DEFINIÇÃO DO PROJETO DE URBANISMO.

OBS.: - O VOLUME DE ESCAVAÇÃO E REATERRO DEVERÁ SER CALCULADO PARA CADA OBRA ESPECÍFICA

| RESUMO AÇO P/ 1METRO H=1,60 |      |            |           |
|-----------------------------|------|------------|-----------|
| CA60                        |      |            |           |
| ø (mm)                      | kg/m | COMPR. (m) | PESO (kg) |
| 5                           | 0,16 | 20,14      | 3,22      |
| PESO TOTAL                  |      |            | 3,22      |
| RESUMO AÇO P/ 1METRO H=1,60 |      |            |           |
| CA50                        |      |            |           |
| ø (mm)                      | kg/m | COMPR. (m) | PESO (kg) |
| 10                          | 0,63 | 29,90      | 18,84     |
| PESO TOTAL                  |      |            | 18,84     |